

products



The AMHTC

The ideal High Tension Connector where Metal shell is not allow.

AMHTC offers the ultimate in safety and reliability under the most severe operating conditions by complete hook up through the standard daisy chain principle.

- Plastic Shell
- Up to 750 Amps
- Ip 67
- Up to 240mm² crimp
- High impact, flame retardant thermoplastic insulators

[click here for more](#)



Amphenol GT

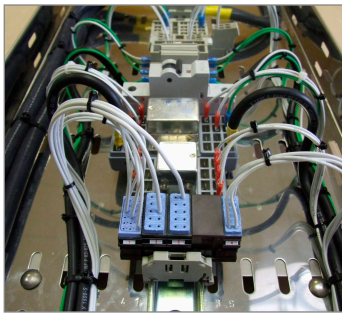
Your high performance, high power, high voltage rugged sealed connector.

The GT is a 5015 type connector, with a Reverse Bayonet coupling mechanism. Designed originally for use by the military, however it is now the preferred connector for rail mass transit.

- ¼ turn mating
- Waterproof IP67 - IP69K
- Smoke/Flame Retardant Insert
- Huge choice of shell styles
- Up to 4.200V and 900 A

[click here for more](#)

news



Fully Integrated Electrical Solution
for decentralized application.

**According to NFF61-017 Standard
and Approved by SNCF**

[click here for more](#)



Meet us at Suisse Traffic Expo 2011 in Bern.

In cooperation with our partner, the company Compona.

We are pleased to inform you that Amphenol will participate to Suisse Traffic Expo from 06. to 09. September 2011 in Bern. You can find our products in the hall 3.0, place C009.

[click here for more](#)